

Report on the results of KDDI's nature disclosure project

KDDI CORPORATION
Sustainability Planning Department
Satoshi Hyouda

January 30, 2025



KDDI GREEN PLAN

Introduction to KDDI Business

1

Based on telecommunications, we expand our business from the personal domain to the business domain globally, promoting our mid-term management strategy of 'Sustainability Management'.

Personal Services Segment

- Consumer telecommunications business
- Life design business



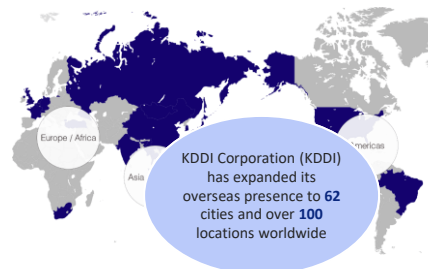
Business Services Segment

- Consumer telecommunications & IT services business
- IoT & DX solutions



Global Segment

- ICT business & data center business
- Overseas telecommunications business (Myanmar/Mongolia)



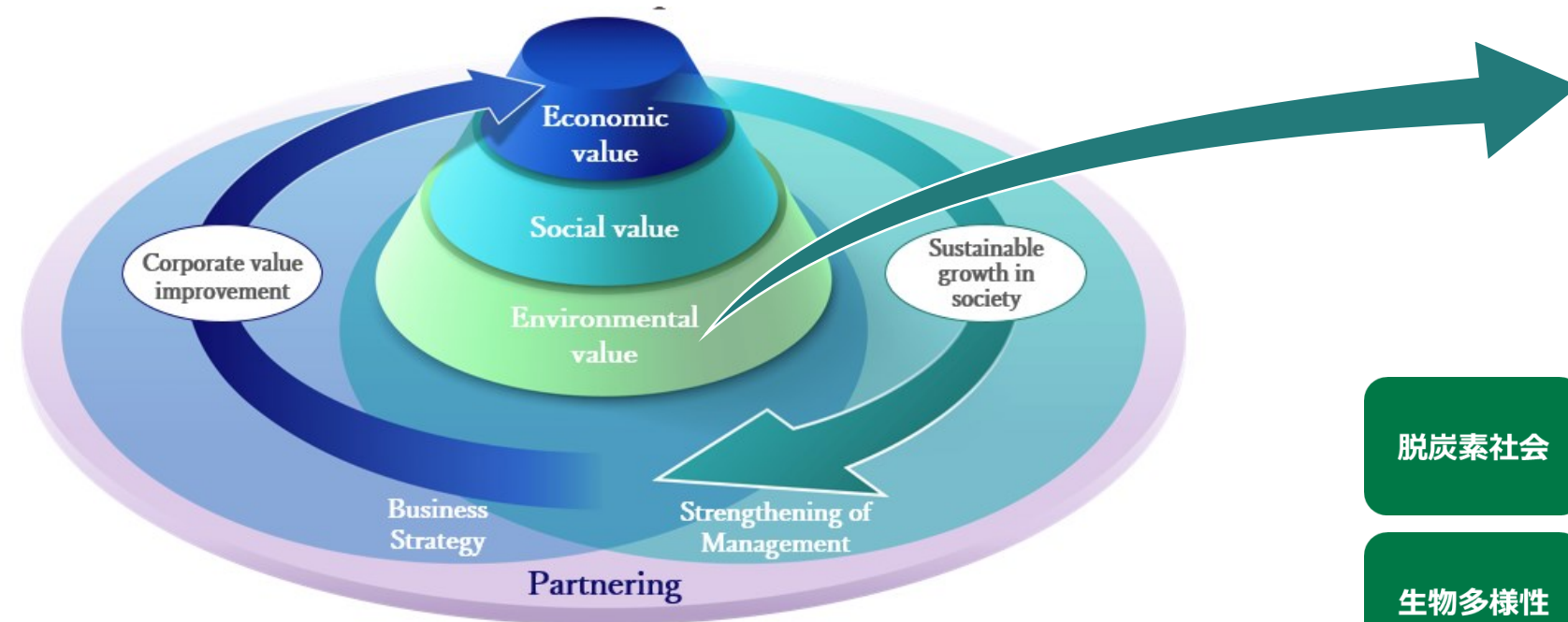
Outline of Mid-Term Management Strategy



KDDI Group's Sustainability Management

2

As part of our sustainability management, we recognize 'environmental value' as a key issue and promote our business accordingly.



脱炭素社会	攻め	DX・LX事業を通じた社会の脱炭素推進 再エネ創出
	守り	KDDI事業のCO2排出量の削減
生物多様性	攻め	通信技術による生物多様性の可視化・回復
	守り	事業を通じた生態系影響の抑制
循環型社会	攻め	通信・再エネによる循環型社会への貢献
	守り	事業活動の資源リサイクル追及

Why is KDDI Committed to Nature Positive Initiatives?

3

KDDI's telecommunications business is supported by natural capital, and telecommunication technology has the potential to contribute to being nature positive.

Telecommunications Business Related to Nature



Telecommunication business

Entry of personnel for the construction and maintenance of communication base stations in natural environments.



Value chains

The metals used as raw materials for smartphones are extracted from mines.

Telecommunication Technologies Contributing to Nature Positive



IoT

By detecting and recording the organisms that inhabit the area, we collect ecological data that needs to be protected.



Drones

Drones can capture images of forests and land from above, allowing for a comprehensive understanding of the situation over a wide area.

We are installing telecommunications infrastructure with consideration for the natural environment.

Initiatives to Protect Terrestrial Environments "Yakushima Island"

The base stations use electricity generated from hydroelectric power.

Construction with consideration for the landscape.

(Miniaturization of base stations, with cables routed through trenches for installation)

We minimize the impact on the environment.

(Installed cables using existing power lines and utility poles)

Initiatives to Protect Marine Environments "Submarine cable"

Designing cable routes to avoid coral reefs

Construction scheduled to avoid the sea turtle nesting season

Published the TNFD report in 2023

The first telecommunications operator in Japan to disclose the final recommendations of TNFD (December 2023)

On the other hand, the lack of response to the recommended disclosure item 'scenario analysis' remains a challenge

TNFD Report of KDDI

Updated
on Mar.28

KDDI Corporation TNFD Report 2023 v2

- The Challenge towards Nature-Positive
Through the Power to Connect -



Taskforce on Nature-related
Financial Disclosures

Background

June
2023

Referring to version β0.4 of TNFD, we conducted the analysis using the LEAP approach

December
2023

Referring to version 1.0 of TNFD, we reflected the changes in the report and further analyzed the focal species

March
2024

Based on the analysis results of the focal species, we conducted field surveys
We held dialogues regarding the TNFD report

September
2024

KDDI was selected for the Ministry of the Environment's model project for supporting nature disclosures

Overall processes involved in scenario analysis

6

Conducted scenario analysis targeting KDDI's telecommunications business.
Identified the risks and opportunities of each scenario in a cross-departmental workshop and evaluated their impact on the company.

(1) Define scenarios

Identify risks and opportunities

Evaluate impact/formulate solutions

(3) Integrate nature and climate scenarios

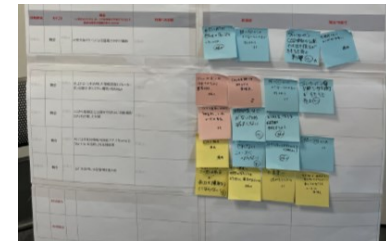
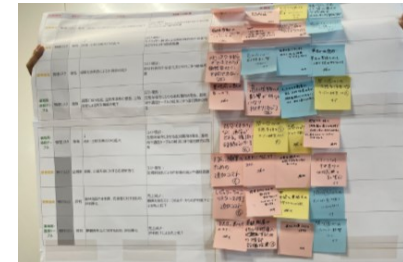
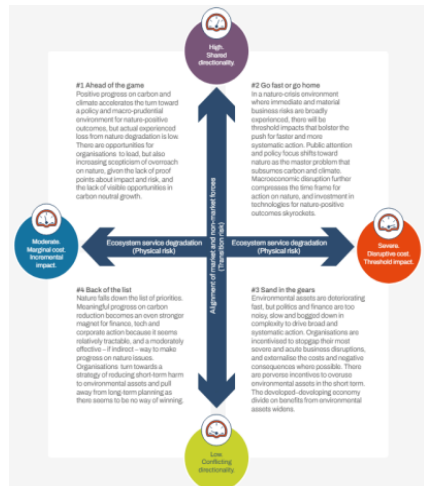
(2) Conduct company-wide workshops

Identify the scope and define the assumed scenarios for conducting the analysis.

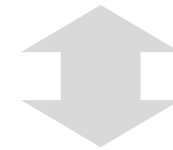
Discuss the risks and opportunities of the telecommunications business in each scenario.

Develop measures and assess the impact on us regarding the identified risks and opportunities.

Integrate scenarios related to nature and climate change.



TNFD Taskforce on Nature-related Financial Disclosures



TCFD TASK FORCE ON CLIMATE-RELATED FINANCIAL DISCLOSURES

Quoted from TNFD's "Recommendations of the Taskforce on Nature-related Financial Disclosures"

Action plan for scenario analysis: (1) Define scenarios

7

We identified and linked the key components of each scenario to the relevant aspects of KDDI's business operations. We then defined scenarios in a way that is easy to understand for internal divisions and employed them in company-wide workshops.

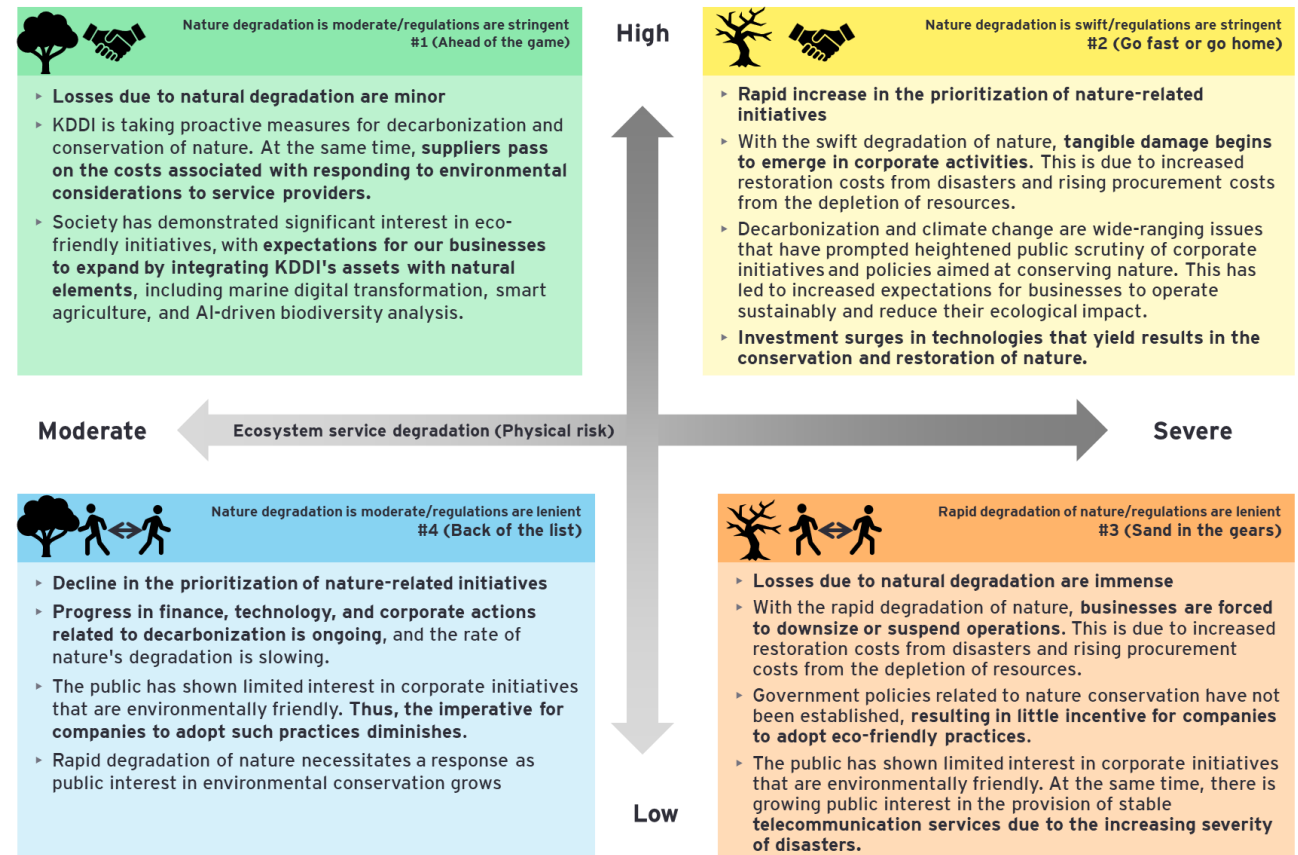
Source: TNFD framework

Guidance on scenario analysis is abstract and difficult to understand



Definitions set forth in KDDI report

Overview of scenarios issued by the TNFD



Action plan for scenario analysis: (2) System for conducting company-wide workshops 8

We conducted company-wide workshop to incorporate a wide range of perspectives. Proactively outline roles in technology, business, management, and corporate divisions to stimulate discussion.

Participating divisions: Engineering/Business divisions		Participating divisions: Management/Corporate divisions	
Participating divisions	Role (provide feedback on the following matters)	Participating divisions	Role (provide feedback on the following matters)
Engineering divisions	Reliance and impact of telecommunication base stations on nature	Management divisions	Potential business impact
Research divisions	New developments in environmental technology	Procurement divisions	Impact of environmental changes on supply chains and procurement
Solutions divisions	Construction and operation of data centers and their impact on nature	Accounting divisions	Potential impact on earnings and financial implications
Regional co-creation divisions	New business and risks related to the conservation of local nature	Sustainability divisions	Provide feedback on how to balance nature conservation with business operations

Action plan for scenario analysis: (3) Integrate nature and climate scenarios

We integrated the four scenarios of natural capital with those of climate change, taking into consideration the business impact on KDDI and alignment with TCFD

TNFD: Natural capital scenarios

In scenario I, we envision a world where nature degradation is moderate, and a framework of regulations dedicated to the preservation of nature is being established.



In scenario III, we envision a world where natural degradation occurs rapidly and regulations concerning the conservation of nature are lenient.



TCFD: Climate change scenarios

In the 1.5°C scenario, we envision a world in which a carbon free society will be rapidly realized.






In the 4°C scenario, we envision a world in which physical impact will become apparent due to lack of measures against climate change.



Key takeaways from our analysis: Scenario analysis (risk considerations)

10

Scenario III (where natural degradation occurs rapidly but no regulations related to nature are implemented) would have a significant impact on our business, particularly in the areas of communication infrastructure and devices.

	Major affects	Impact on KDDI's businesses		Key recommendations
		Scenario I (1.5°C scenario)	Scenario III (4°C scenario)	
 Smartphones	Depletion of metal resources used in electronic devices	Low	Moderate	Recycle used mobile devices
 Base stations	Increase in floods and landslides due to weaker forest disaster prevention capabilities Increase in accidents at telecommunication base stations	Moderate	Significant	Base station installation with minimized environmental impact Utilization of Starlink
 Data centers	Depletion of water resources used for server cooling systems	Low	Moderate	Introduce water-saving infrastructure

Key takeaways from our analysis: Risk responses

11

In response to environmental risks, KDDI will advance the recycling of mobile devices and develop communication infrastructure that minimizes environmental impact.

Smartphones

Recycle used devices

- Manual disassemble devices to recovery gold, silver and copper
- Aim to achieve a **99.8%** recycling rate



Base stations

Install base stations that minimize environmental impact

- Install cables using existing power lines and utility poles
- Develop areas by employing small-scale base stations and Starlink

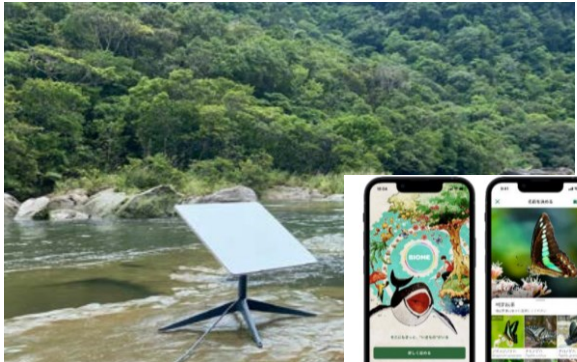


Both Scenario I and Scenario III feature potential business opportunities linked to nature.

Business areas	Impact on KDDI's businesses		Service overview
	Scenario I (1.5°C scenario)	Scenario III (4°C scenario)	
Business that identifies ecosystem services	Moderate	Moderate	Remote underwater photography by a sea-to-air drones Invasive alien species survey using a biological information visualization app
Regional revitalization business that contributes to preserving biodiversity	Low	Moderate	Demonstrate the feasibility of supporting pesticide-free agriculture through the utilization of IoT

By utilizing satellite communication, drones, and IoT, we contribute to the visualization and conservation of biodiversity.

Identifying ecosystem services



Satellite communications

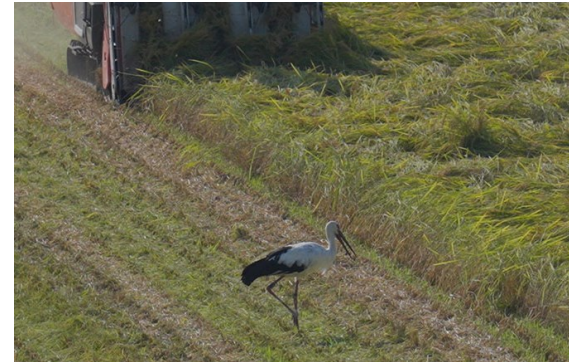
Conduct invasive alien species survey using the biological information visualization app “Biome” and Starlink



Drones

Conduct remote underwater photography by a sea-to-air drones

Regional revitalization



IoT

Contribute to nurturing storks by demonstrating the feasibility of supporting pesticide-free agriculture through the utilization of IoT



IoT

Demonstrate the feasibility of developing oyster cultivation know-how using IoT sensors

Conclusions: What is the purpose of conducting scenario analysis?

14

Scenario analysis enables us to forecast the long-term impact of the natural environment on KDDI, from perspectives of both risk and business opportunity.

Significance of Scenario analysis

Enables us to anticipate our own businesses from a **long-term perspective** and **take a holistic view of the entire value chain**



Obtaining a holistic view of the value chain is a long-term endeavor.

Obtaining a holistic view cannot be done through KDDI's efforts alone.

Importance of risks and opportunities

In conducting business, it is important for KDDI to continually **strive to minimize their environmental impact while also seizing business opportunities**



Conclusions: Benefits of scenario analysis and expectations going forward

15

Through the "scenario analysis" tool, which allows us to gain a broad perspective, we anticipate that the expansion of biodiversity and environmental initiatives among many companies will lead to future opportunities for collaboration on new endeavors.

Opportunities for discussions with internal divisions

Using our scenario analysis, we will conduct discussions on biodiversity and the environment with **internal divisions**

Engineering & research
divisions

Corporate planning
divisions

Business divisions

Corporate divisions
Sustainability divisions

Biodiversity, Decarbonized society & Circular economy

TNFD began with biodiversity guidelines, but it is also closely related to achieving a **decarbonized society** and a **circular economy**. We have come to realize the **need to consider these goals in an integrated manner within our initiatives.**



KDDI GREEN PLAN

「つなぐチカラ」を進化させ、
誰もが思いを実現できる社会をつくる。

KDDI VISION 2030

