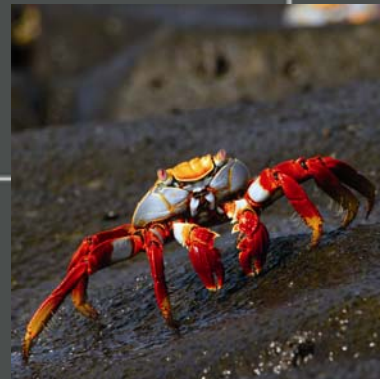
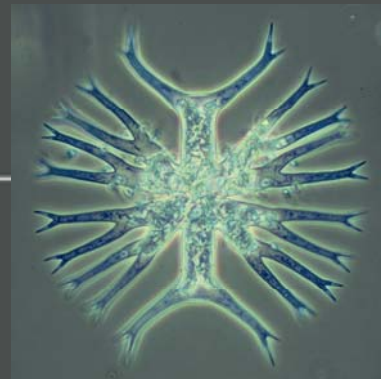


Session 1: Acting on the causes of biodiversity loss: indirect drivers

**Chair: Dr David Cooper,
Secretariat CBD**



Strategic Goal A

Address the underlying causes of biodiversity loss by mainstreaming biodiversity across government & society

- **Target 1.** By 2020, everyone is aware of the value of biodiversity and what steps they can take to protect it.
- **Target 2.** By 2020, the values of biodiversity are integrated by all countries in their national accounts, national and local strategies and planning processes, and by business, applying the ecosystem approach.
- **Target 3.** By 2020, subsidies harmful to biodiversity are eliminated, and positive incentives for the conservation and sustainable use of biodiversity are developed and applied.
- **Target 4.** By 2020, governments and stakeholders at all levels have formulated, and have begun to implement sustainability plans to increase efficiency, reduce waste and keep the use of resources within ecological limits;

Acting on the causes of biodiversity loss: indirect drivers



Prof Tet Yahara (Kyushu Univ.), Dr Naoki Adachi (Response Ability Inc)

- Everyone is aware of the value of biodiversity and what steps they can take to **conserve** it and to **live together with nature**.

Comment: “to protect it” is too narrow-focused as an action suggested for citizen.

- The values of biodiversity are integrated by all countries in their national accounts, national and local strategies and planning processes, and by business, **taking every possible measure to conserve biodiversity with a goal of no net loss**.

Comment: “Ecosystem Approach” is not the only solution.

- Subsidies harmful to biodiversity are eliminated, and positive incentives for the conservation and sustainable use of biodiversity are developed and applied.
- Governments and stakeholders at all levels have formulated, and have begun to implement, sustainability plans to keep the use of resources within **the limit of natural reproduction**.

Comment: “ecological limits” is difficult to be measured; can be changed by the development of science/technology.

Acting on the causes of biodiversity loss: indirect drivers



Dr Ybele Hoogeveen, EEA, Denmark

- Everyone is aware of the value of biodiversity and what steps they can take to protect it. **Biodiversity value is scale and stakeholder dependent.**
- The values of biodiversity, ... are recognized and reflected by all countries in their ... policies and strategies... and by the private sector. Biodiversity conservation is not one-directional. **Many options with different trade-offs exist.**
- Subsidies harmful to biodiversity are eliminated. **This requires an explicit and supported biodiversity target.**
- Government and stakeholders at all levels ... implement sustainable plans to increase efficiency, reduce waste, and maintain the use of resources within ecological limits. **The latter requires accepted thresholds and a spatially explicit strategy.**

Acting on the causes of biodiversity loss: indirect drivers



Prof Philippe Le Prestre, University of Laval, Canada (SC-DIVERSITAS)

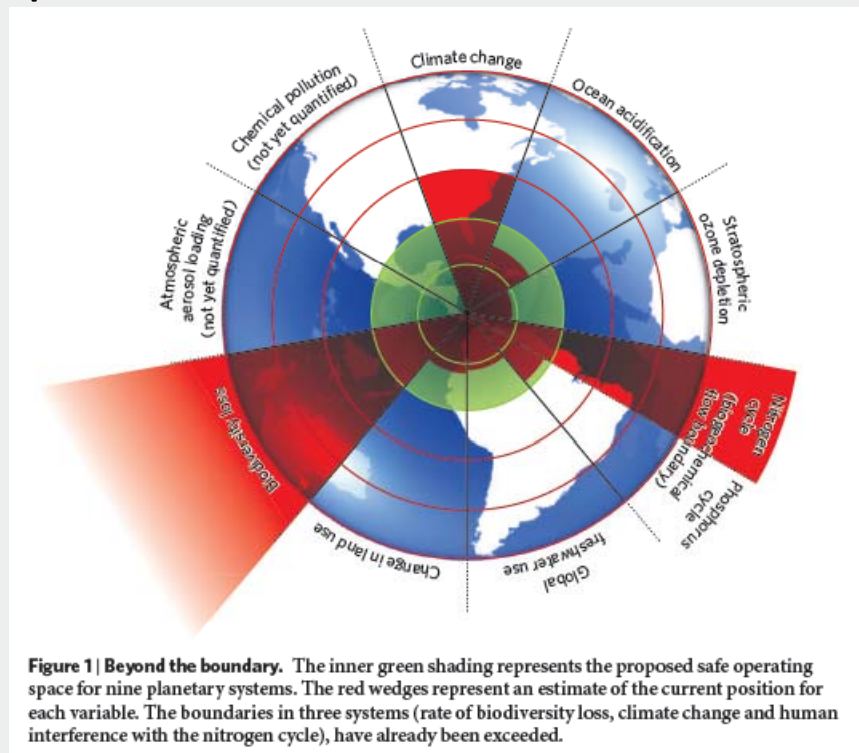
- In general
 - Re. SG A: For many DC, how can biodiversity contribute to development
 - More attention needed on structural measures;
 - Pb of «fit» between ecosystems and institutions not addressed => make it into a new target 5?
- **Target 1:** The pb is less how to change values than change behaviour
- **Target 2:** both too vague and too ambitious; what values? Will justify business as usual? Add articulation among regulatory regimes?
- **Target 3:** Excellent, but should include elimination of harmful institutions (e.g. corruption) & not neglect the structural perspective
- **Target 4:** a welcome shift in focus to sustainable use, but to what driver does it refer? Also, make it clear that biodiversity protection should be linked to social justice.

DIVERSITAS

Acting on the causes of biodiversity loss: indirect drivers

Prof Thomas Elmqvist, University of Stockholm, Sweden (SC-DIVERSITAS)

Target 4: By 2020, Governments and stakeholders at all levels have formulated, and have begun to implement, sustainability plans to keep the use of resources within **ecological limits**.



How do we determine these limits?
How do we scale down from global to local scales?

D
I
V
E
R
S
I
T
A
S