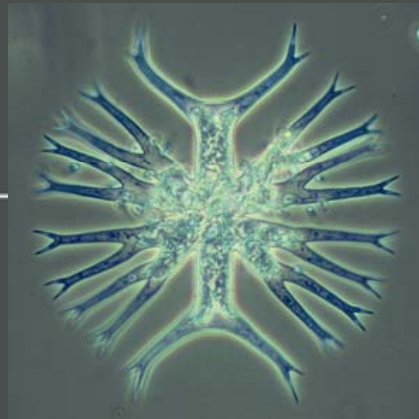


# Science-Policy Dialog: toward an IPBES

Chair: Dr Naoki Adachi,  
Response Ability, Inc



# Science-Policy Dialog: toward an IPBES



Prof. Margaret Palmer, University of Maryland, USA (Chair  
freshwaterBIODIVERSITY)

IBPES will:

- **Reduce the disconnect between the scientists & policy makers that is exacerbating B & ES losses and impeding production of policy-relevant science**
- **Ensure that incentives being developed to protect B & ES are scientifically informed**
- **Provide a generally accepted source of credible information on biodiversity and ecosystem services**

D  
I  
V  
E  
R  
S  
I  
T  
A  
S

# Science-Policy Dialog: toward an IPBES



Dr Mark Lonsdale, Chief Entomology, CSIRO, Australia (SC-DIVERSITAS)

## Key operating principles

- Scientific independence
  - Prerequisite for IPBES
  - Must not be a subsidiary body to an existing intergovernmental organization
- Subject to critical peer review:
  - Gold standard in science – need to codify it better
  - Will apply to IPBES reports AND
  - Must also assess **source** material for assessments carefully (e.g. journal quality, grey literature, traditional knowledge)
  - Rigorous governance of peer review process **critical**

D  
I  
V  
E  
R  
S  
I  
T  
A  
S

# Science-Policy Dialog: toward an IPBES



Dr Anantha Duraiappah, Executive Director, IHDP, Germany (SC-DIVERSITAS)

## IPBES: Some key decisions

### Scope

- One unified and authoritative voice for Biodiversity and Ecosystem
- Services MEAs

### Legal Basis

- Independence
- Government Ownership

### Governance

- Plenary
  - Independence
- Executive Body
  - Credibility

D  
I  
V  
E  
R  
S  
I  
T  
A  
S

# Science-Policy Dialog: toward an IPBES



Prof Harold Mooney, Stanford University, USA (SC-DIVERSITAS)

- What exactly would IPBES provide?
- What role could the scientific community play in achieving the goals of this platform?

D  
I  
V  
E  
R  
S  
I  
T  
A  
S